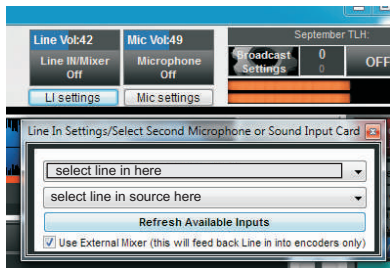


External Mixer Using Nextkast Linein Feature

By default Nextkast uses the default sound card in windows.
Run the Default sound card audio out into one channel of your physical mixer
Run the Main out of the Physical mixer into the line in of your sound card.



In the Line In setting in Nextkast, Check use external Mixer.

Now when line in button is pressed audio is channeled from the audio out, into the mixer (giving you volume control of the audio playing from nextkast), then Mic's and other soudrces can be added to your mixer. The mixer main then is fed back into NK using the LineIN, and send to the built in encoder.

